

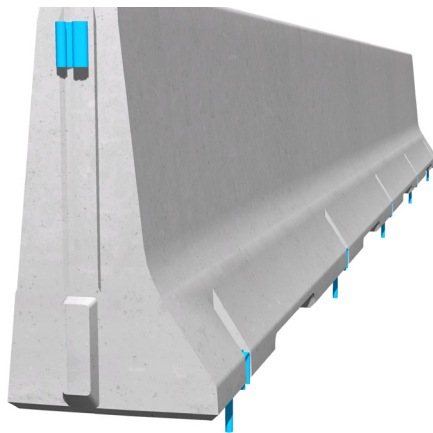
REBLOC RB100A-8

Standard element

Installation
Anchored



Containment level **H2** (covers H1, N1, T3, T2 and T1)
 Working width **W1** (covers W2, W3, W4, W5, W6, W7 and W8)
 Impact severity level **ASI B**



The anchored system with minimum working width is ideal for the application on the edge of bridges, for the protection of bridge piers as well as along the verge of roads.

The reliable restraint function is achieved by the tension bar in combination with five anchor points per element. The integrated coupling system connects the individual elements to form a continuous and strong chain, which safely dissipates the energy caused by vehicle impact.

Special dilatation elements for bridge expansion joints are available and take up movements caused by temperature fluctuations.

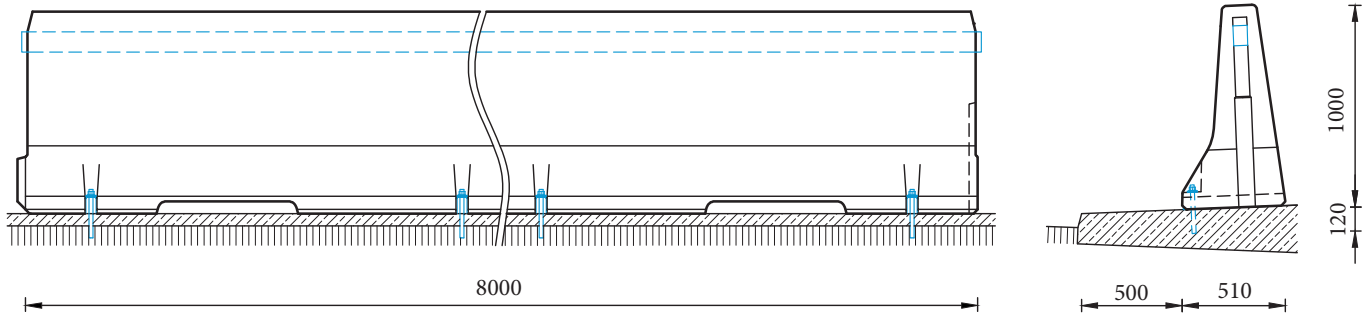
REBLOC RB100A-8

Standard element

H2

W1

Technical data



all dimensions in mm

Containment level	H2
Working width	W1
Impact severity level	ASI B
Vehicle intrusion	VI2
Installation	anchored (5 x M20 adhesive anchor in concrete per element)
Terminal elements	not necessary, optional available
Dimensions L x W x H in mm	8000 x 510 x 1000 mm
Weight/element (approx.)	5600 kg
Elements/truck (24 t)	4 elements
Minimum installation length	56 m (not including terminal elements)
Curve radius	$r \geq 108$ m, smaller radii on request
Coupling/exposed steel parts	fully integrated, exposed parts hot-dip galvanized
CE certification	✓