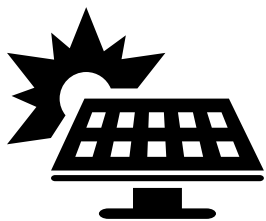




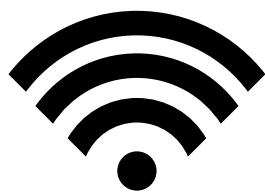
HARDSTAFF
BARRIERS

SENTRIGATE

SOLAR POWERED TRAFFIC CONTROL SOLUTION



**SOLAR
POWERED**



**REMOTE
CONTROLLED**



**EASY
SETUP**



www.hardstaffbarriers.com

sales@hardstaffbarriers.com

SENTRIGATE

SOLAR POWERED TRAFFIC CONTROL SOLUTION

THE BEST PORTABLE, SOLAR POWERED TRAFFIC CONTROL SOLUTION ON THE MARKET TODAY.

The SentiGate is the ultimate solution for those looking for a mobile traffic control solution. Inspired by the need for a product that could be set up in minutes, by a single operative in areas with no access to electricity.

Requiring no machinery for assembly at all, the SentiGate can be wheeled to any location, rain or shine and be functional instantly. The gate (or multiple connected to one controller) can be operated from within security sheds, vehicle cabs or from an operative up to 125m away using our standard IP65 hand held transmitter. Perfect for managing site access, traffic control and isolating temporarily hazardous areas.



CHAPTER 8 COMPLIANT

Optional high visibility reflective markings and panels can be supplied, allowing the SentiGate to be Chapter 8 compliant for use on highway roadwork schemes.



LONG RANGE
KEY FOBS

125M

RANGE



PORTABILITY

Our wheel-based stand and unique lightweight design make it easy to maneuver and relocate the SentiGate to any necessary area.

It is the perfect solution for all your traffic control needs, providing maximum convenience and versatility.



SOLAR POWER

**No plugging in. No Cables.
No power outlets.**

Designed for solar, the modest solar panel and 12V battery will run the barrier without the need for charging in most circumstances.

The solar panel charges the standard battery, which coupled with low power consumption has enough reserve to keep the barrier working throughout overcast situations.



INTERCHANGEABLE BASES

Maximize compatibility and usage with the Sentrigate's versatile base options for freestanding operations or integration into roadside barriers.

Free-Standing Base



For transport and delivery the barrier is separated from the stand using the Allen key provided and stored in the cabinet.



Mass Barriers Base



The SentiGate fits quickly and securely to the base of the Mass barrier for seamless integration into the barriers situated around your site or vehicle restraint system.



Multibloc Base



The TVCB Barrier Multibloc is a great VRS solution and can often be found around construction sites and other schemes. With SentiGate integration, Multibloc barrier is now a great addition for creating site entry points.

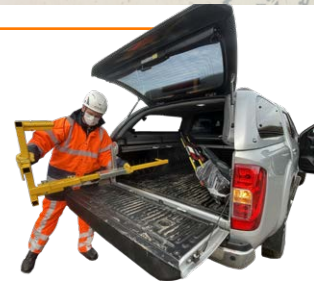


DIMENSIONS

Specifications	VALUE
Height with wheel base stand	2700 mm
Height between floor and gate arm	1100 mm
Gate unit height - With no stand	1900 mm
Arm Length	3000 mm
Gate width	250 mm
Arm width	200 mm

Each SentiGate arm is 3m long, and can pair with another unit to cover an area of 6m.

EASY SETUP & TRANSPORT



SET UP IN 3 MINUTES

Thanks to the quick slot and bolt together design the SentiGate can be easily assembled and disassembled for transport. The Gate is easily loaded in boots, vans & trucks.



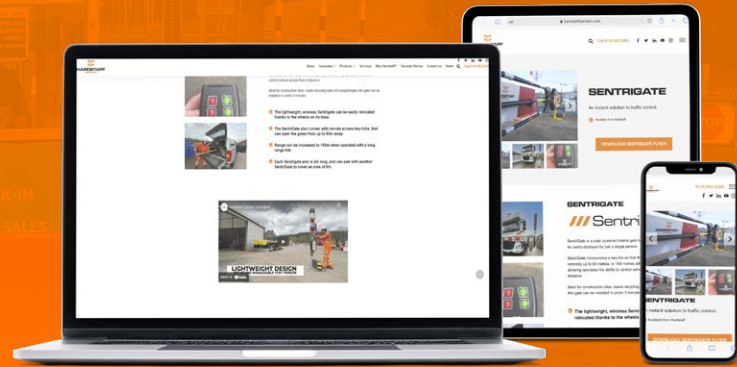
SINGLE OPERATIVE BUILD

The lightweight individual components of the SentiGate mean that a single operative can assemble and move this gate without the need of any assistance from plant or other operatives.



WANT TO FIND OUT MORE?

VISIT OUR WEBSITE
WWW.HARDSTAFFBARRIERS.COM
OR SCAN THE QR CODE



/// SentiGate

FREE DEMONSTRATIONS ARE AVAILABLE UPON REQUEST.

Contact us via email or on our website.



Copyright © 2023 Hill&Smith Infrastructure Ltd All rights reserved. Hill&Smith Infrastructure Ltd reserves the right to alter, without notice the specification, design or conditions of supply of any product or service. All trademarks, service marks and logos are the property of their respective holders, which have not endorsed, sponsored, or otherwise affiliated with Hill&Smith Infrastructure Ltd.



0115 983 2304



www.hardstaffbarriers.com



sales@hardstaffbarriers.com