

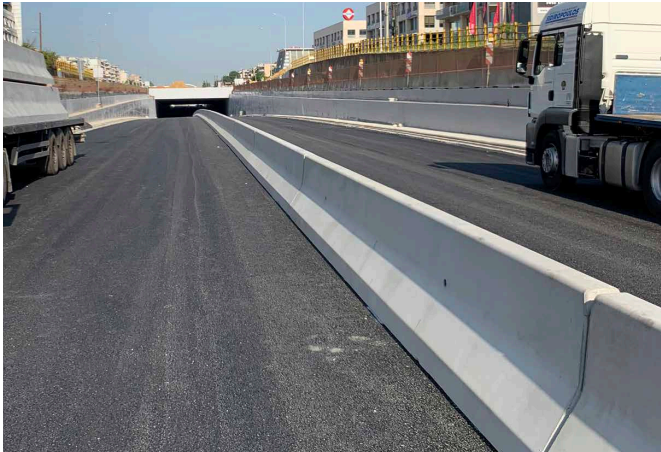
REBLOC RB84XEAL_8

Standard element

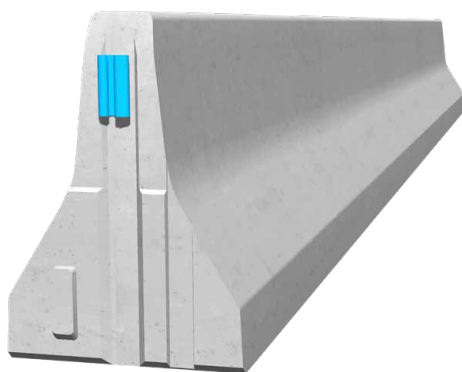


Installation

Free standing



- Containment level **N2** (covers N1, T3, T2, T1)
- Working width **W3** (covers W4, W5, W6, W7, W8)
- Impact severity level **ASI B**



Precast concrete vehicle restraint systems are used for long lasting protection on the central reservation and along the verge. Vehicles deviating from the road are retained or redirected and prevent a dangerous breakthrough onto the opposite carriageway. As a result road users and persons as well as objects at the roadside are well protected.

The integrated, innovative coupling together with a full-length steel tension bar and an ingeniously-designed reinforcement system ensure high security and practicality. The single elements are connected to a strong chain, which safely dissipates the energy caused by vehicle impact.

Thanks to the interlocking coupling, there are no loose parts, which prevent unauthorized removal of pieces and protects fully against vandalism.

 0115 983 2304

 sales@hardstaffbarriers.com | enquiries@hardstaffbarriers.com

 A Division of Hill & Smith Ltd, Hillside, Gotham Road, Kingston-on-Soar, Nottingham, NG11 0DF

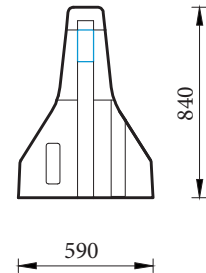
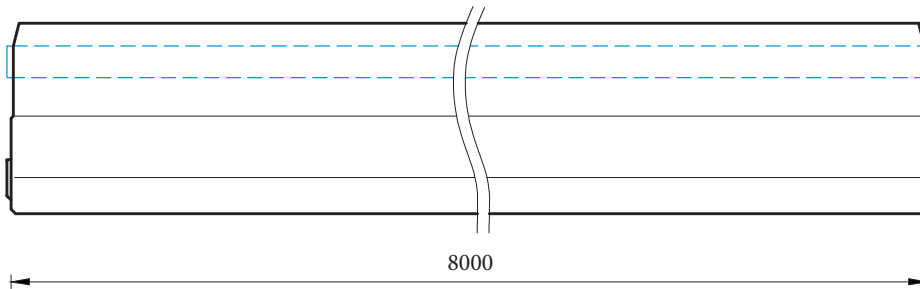
REBLOC RB84XEAL_8

Standard element

N2

W3

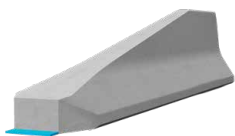
Technical data



all dimensions in mm

Containment level	N2
Working width	W3
Impact severity level	ASI B
Installation	free standing on asphalt/concrete
Terminal elements	required; REBLOC 84XEA_4T.01 (2 x M24 adhesive anchors)
Dimensions L x W x H in mm	8000 x 590 x 840 mm
Weight/element	4800 kg
Elements/truck (24 t)	5 elements
Minimum installation length	80 m
Curve radius	$r \geq 260$ m, smaller radii on request
Coupling/exposed steel parts	fully integrated, exposed parts hot-dip galvanized
CE certification	✓

System elements - combinable



Standard element
REBLOC 84XEA_4T.01