

REBLOC RB80XA_8_6P

Standard element

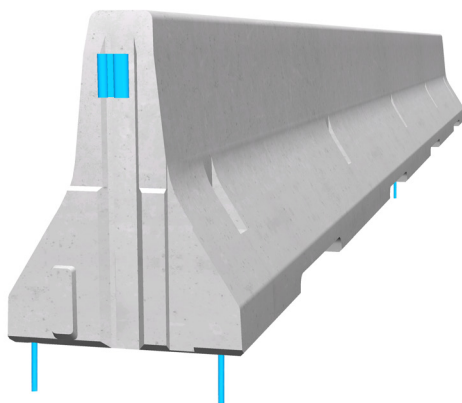
Installation
Anchored

H2

W2



Containment level **H2** (covers H1, N1, T3, T2 and T1)
Working width **W2** (covers W3, W4, W5, W6, W7 and W8)
Impact severity level **ASI B**



Precast concrete vehicle restraint systems are used for long lasting protection in the central reservation or along the verge. Vehicles deviating from the road are retained and prevent a dangerous breakthrough. As a result road users and persons as well as objects at the roadside are well protected.

The reliable restraint function is achieved by the tension bar in combination with six anchors per element. The integrated coupling system connects the individual elements to form a continuous and strong chain, which safely dissipates the energy caused by vehicle impact.

Thanks to the interlocking coupling, there are no loose parts, which prevent unauthorized removal of pieces and protects fully against vandalism.

The system is also available as single-sided effective REBLOC 80XA_8_3P with 3 anchorages on the verge of the road.

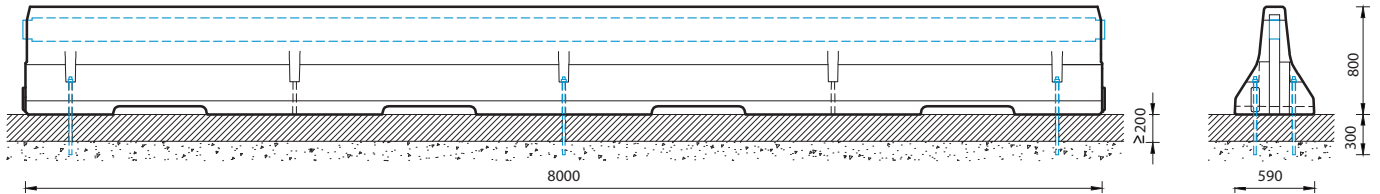
REBLOC RB80XA-8-6P

Standard element

H2

W2

Technical data



all dimensions in mm

| | |
|------------------------------|---|
| Containment level | H2 |
| Working width | W2 |
| Impact severity level | ASI B |
| Vehicle intrusion | VI3 |
| Installation | anchored (6 x anchor pins REPIN20_580 in asphalt per element) |
| Terminal elements | not necessary, optional available |
| Dimensions L x W x H in mm | 8000 x 590 x 800 mm |
| Weight/element | 4800 kg |
| Elements/truck (24 t) | 5 elements |
| Minimum installation length | 56 m |
| Curve radius | $r \geq 250$ m, smaller radii on request |
| Coupling/exposed steel parts | fully integrated, exposed parts hot-dip galvanized |
| CE certification | ✓ |

