

# REBLOC RB80XA\_8\_6A

Standard element

Installation

Anchored

H2

W2



Containment level

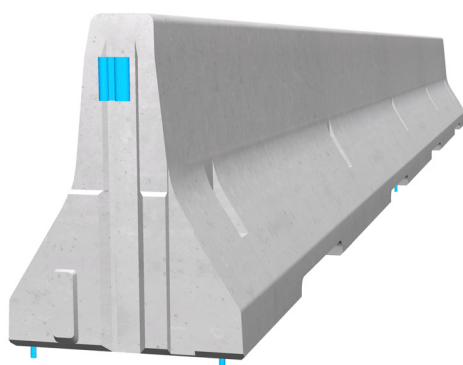
H2 (covers H1, N1, T3, T2 and T1)

Working width

W2 (covers W3, W4, W5, W6, W7 and W8)

Impact severity level

ASI B



The anchored system with minimum working width is ideal for the application in the central reservation of bridges and for the protection of bridge piers.

The reliable restraint function is achieved by the tension bar in combination with six anchors per element. The integrated coupling system connects the individual elements to form a continuous and strong chain, which safely dissipates the energy caused by vehicle impact.

A system related dilatation for bridge expansion joints was installed in the first third of the installation length. This evens out natural movements of the construction due to temperature fluctuations and transmits longitudinal forces.

The system is also available as single-sided effective REBLOC 80XA\_8\_3A with 3 anchorages on the verge of the road.

0115 983 2304

sales@hardstaffbarriers.com | enquiries@hardstaffbarriers.com

A Division of Hill & Smith Ltd, Hillside, Gotham Road,  
Kingston-on-Soar, Nottingham, NG11 0DF

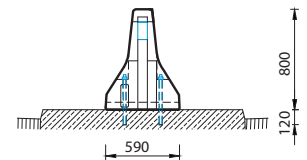
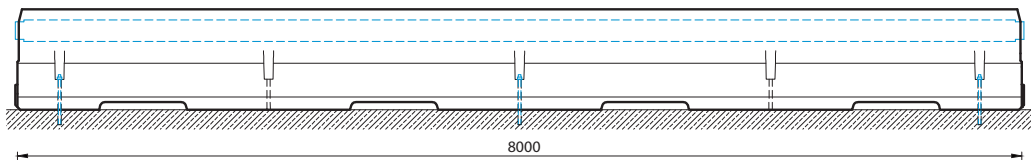
# REBLOC RB80XA-8-6A

Standard element

H2

W2

## Technical data



all dimensions in mm

Containment level	H2
Working width	W2
Impact severity level	ASI B
Vehicle intrusion	VI2
Installation	anchored (6 x M16 adhesive anchors in concrete per element)
Terminal elements	not necessary, optional available
Dimensions L x W x H in mm	8000 x 590 x 800 mm
Weight/element	4800 kg
Elements/truck (24 t)	5 elements
Minimum installation length	56 m
Curve radius	$r \geq 250$ m, smaller radii on request
Coupling/exposed steel parts	fully integrated, exposed parts hot-dip galvanized
CE certification	✓

