

REBLOC RB80XA_8_3P

Standard element

Installation

Anchored

H2

W2

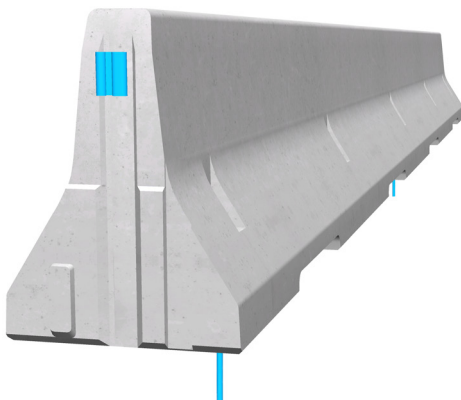


Containment level
Working width
Impact severity level

H2 (covers H1, N1, T3, T2 and T1)

W2 (covers W3, W4, W5, W6, W7 and W8)

ASI B



Precast concrete vehicle restraint systems are used for long lasting protection along the verge. Vehicles deviating from the road are retained and prevent a dangerous breakthrough. As a result road users and persons as well as objects at the roadside are well protected.

The reliable restraint function is achieved by the tension bar in combination with three anchors per element. The integrated coupling system connects the individual elements to form a continuous and strong chain, which safely dissipates the energy caused by vehicle impact.

Thanks to the interlocking coupling, there are no loose parts, which prevent unauthorized removal of pieces and protects fully against vandalism.

The system is also available as double-sided effective REBLOC 80XA_8_6P with 6 anchorages in the central reservation.

 0115 983 2304

 sales@hardstaffbarriers.com | enquiries@hardstaffbarriers.com

 A Division of Hill & Smith Ltd, Hillside, Gotham Road,
Kingston-on-Soar, Nottingham, NG11 0DF

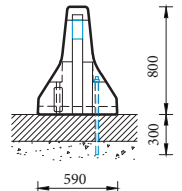
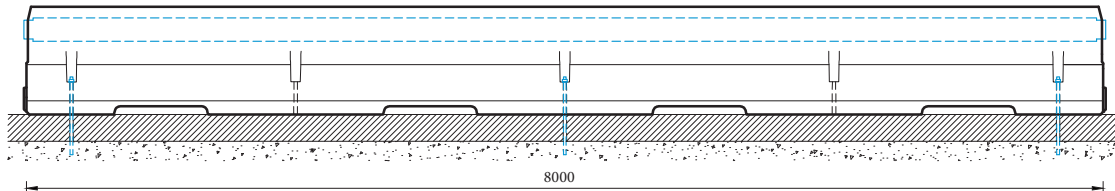
REBLOC RB80XA-8-3P

Standard element

H2

W2

Technical data



all dimensions in mm

Containment level	H2
Working width	W2
Impact severity level	ASI B
Vehicle intrusion	VI3
Installation	anchored (3 x anchor pins REPIN20_580 in asphalt per element on the road side facing away)
Terminal elements	not necessary, optional available
Dimensions L x W x H in mm	8000 x 590 x 800 mm
Weight/element	4800 kg
Elements/truck (24 t)	5 elements
Minimum installation length	56 m
Curve radius	$r \geq 250$ m, smaller radii on request
Coupling/exposed steel parts	fully integrated, exposed parts hot-dip galvanized
CE certification	✓

