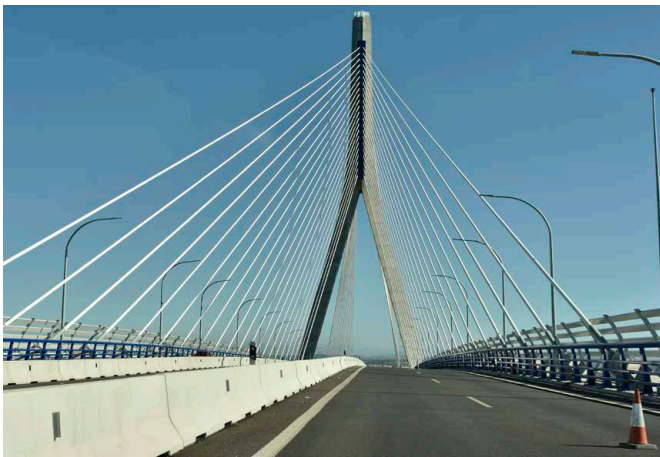


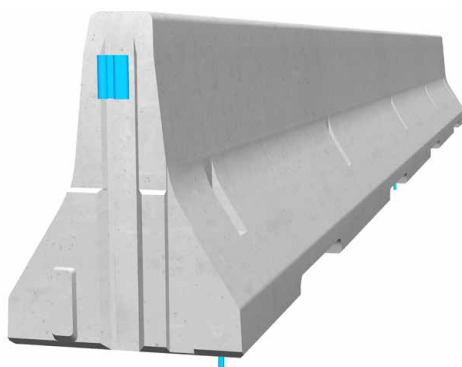
# REBLOC RB80XA\_8\_3A

Standard element

Installation  
**Anchored**



Containment level **H2** (covers H1, N1, T3, T2 and T1)  
 Working width **W2** (covers W3, W4, W5, W6, W7 and W8)  
 Impact severity level **ASI B**



The anchored system with minimum working width is ideal for the application on the edge of bridges, for the protection of bridge piers as well as along the verge of roads.

The reliable restraint function is achieved by the tension bar in combination with three anchors per element. The integrated coupling system connects the individual elements to form a continuous and strong chain, which safely dissipates the energy caused by vehicle impact.

A system related dilatation for bridge expansion joints was installed in the first third of the installation length. This evens out natural movements of the construction due to temperature fluctuations and transmits longitudinal forces.

 0115 983 2304

 [sales@hardstaffbarriers.com](mailto:sales@hardstaffbarriers.com) | [enquiries@hardstaffbarriers.com](mailto:enquiries@hardstaffbarriers.com)

 A Division of Hill & Smith Ltd, Hillside, Gotham Road, Kingston-on-Soar, Nottingham, NG11 0DF

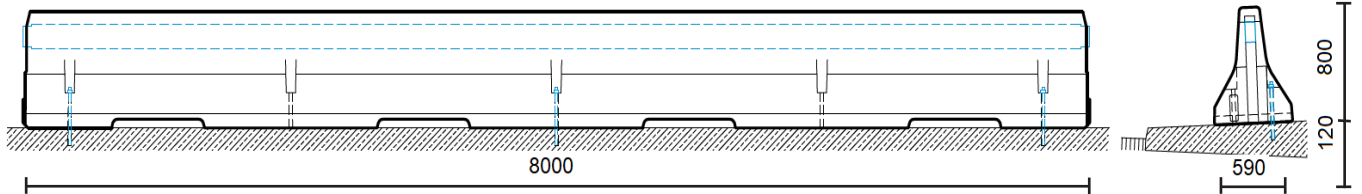
# REBLOC RB80XA\_8\_3A

Standard element

H2

W2

## Technical data



all dimensions in mm

Containment level	H2
Working width	W2
Impact severity level	ASI B
Installation	anchored (3 x M16 adhesive anchors in concrete per element)
Terminal elements	not necessary, optional available
Dimensions L x W x H in mm	8000 x 590 x 800 mm
Weight/element	4800 kg
Elements/truck (24 t)	5 elements
Minimum installation length	56 m
Curve radius	$r \geq 250$ m, smaller radii on request
Coupling/exposed steel parts	fully integrated, exposed parts hot-dip galvanized
CE certification	✓