

# REBLOC RB100SFS-8

Standard element

Installation  
**Free standing**

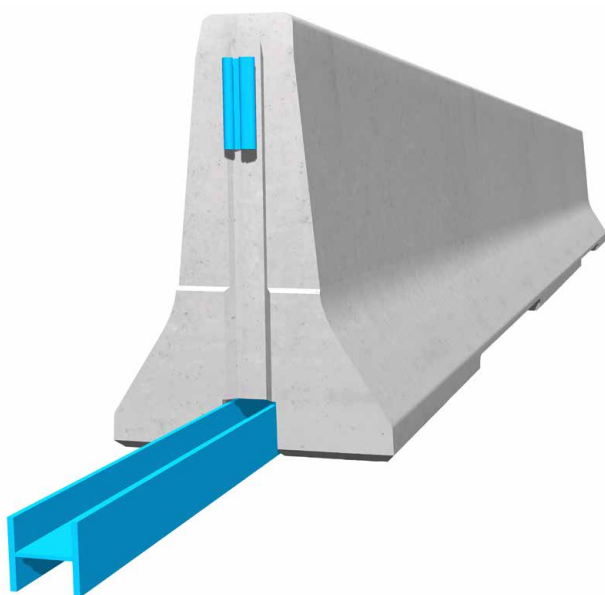
**H4b**

**W5**



Containment level  
Working width  
Impact severity level

**H4b** (covers H3, H2, H1, N1, T3, T2 and T1)  
**W5** (covers W6, W7 and W8)  
**ASI B**



Precast concrete vehicle restraint systems are used for long lasting protection on the central reservation and along the verge. Vehicles deviating from the road are retained or redirected and prevent a dangerous breakthrough onto the opposite carriageway. The integrated, innovative coupling does not contain any loose parts.

This does not only enhance the safety, but also the installation speed. The easy installation, which does not depend on weather conditions, reduces the disruptions of the traffic flow.

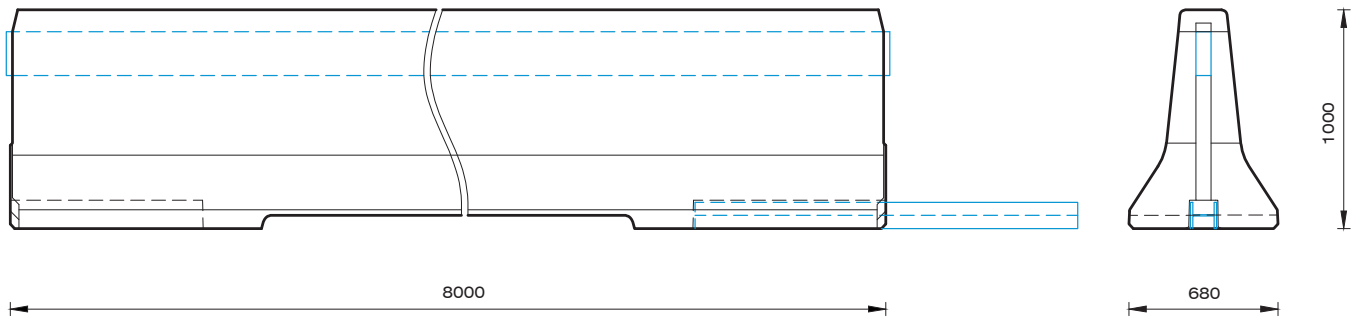
Thanks to the interlocking construction, there are no loose parts, which prevent unauthorized removal of pieces and protects fully against vandalism.

# REBLOC RB100SFS-8

Standard element



## Technical data



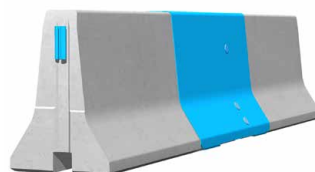
all dimensions in mm

Containment level	H4b
Working width	W5
Impact severity level	ASI B
CE-certification	✓
Installation	free standing on asphalt/concrete
Terminal elements	required; REBLOC 100SFS_4T (4 x M24 adhesive anchors)
Dimensions L x W x H in mm	8000 x 680 x 1000 mm
Weight/element	6750 kg
Elements/truck (24 t)	3 elements
Minimum installation length	96 m
Curve radius	$r \geq 350$ m, smaller radii on request
Coupling/exposed steel parts	fully integrated, exposed parts hot-dip galvanized

## System element - combinable



Terminal element  
REBLOC 100SFS\_4TR/L



Dilatation element  
REBLOC 100SFS\_2.35EXM