

# REBLOC RB140SFS-5.5

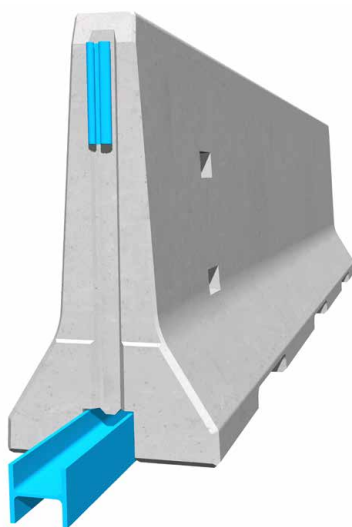
Standard element

Installation  
**Free standing**

<b>N2</b>	<b>W2</b> <sup>1)</sup>
<b>H4a</b>	<b>W4</b>



Containment level	<b>N2</b> (covers N1, T3, T2 and T1)
Working width	<b>W2</b> (covers W3, W4, W5, W6, W7 and W8)
Containment level	<b>H4a</b> (covers H3, H2, H1, N1, T3, T2 and T1)
Working width	<b>W4</b> (covers W5, W6, W7 and W8)
Impact severity level	<b>ASI B</b>



Precast concrete vehicle restraint systems are used for long lasting protection on the central reservation and along the verge. Vehicles deviating from the road are retained or redirected and prevent a dangerous breakthrough onto the opposite carriageway.

The integrated, innovative coupling does not contain any loose parts. This does not only enhance the safety, but also the installation speed. The easy installation, which does not depend on weather conditions, reduces the disruptions of the traffic flow.

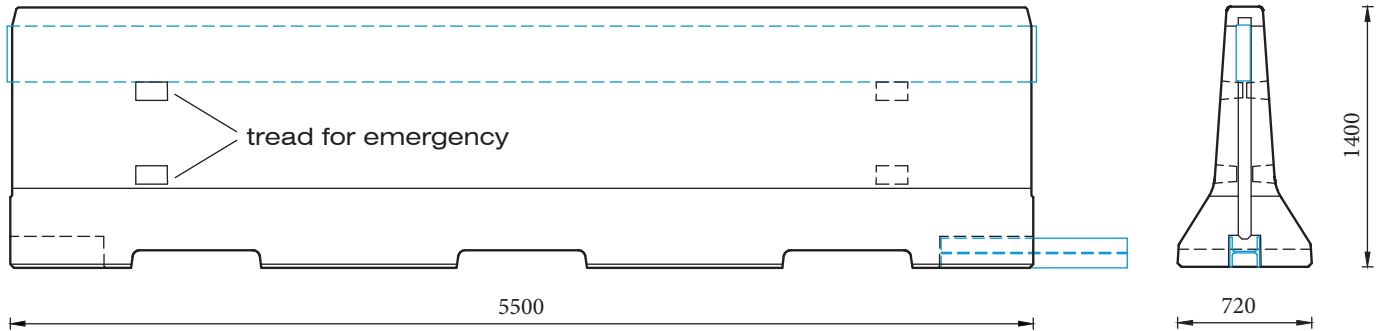
Thanks to the interlocking coupling, there are no loose parts, which prevents unauthorized removal of pieces and protects fully against vandalism.

# REBLOC 140SFS\_5.5

Standard element



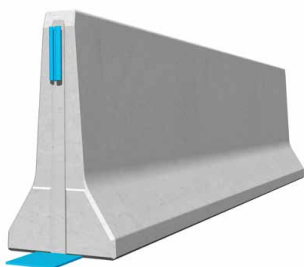
## Technical data



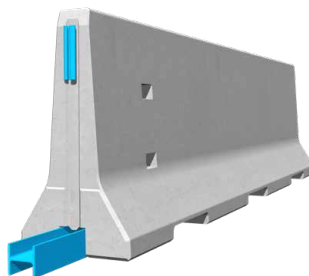
all dimensions in mm

Containment level	N2	H4a
Working width	W2	W4
Impact severity level	ASI B	ASI B
CE certification	✓	
Installation	free standing on asphalt/concrete	
Terminal elements	required; REBLOC 140SFS_6T (4 x screwbolts Ø 20 mm)	
Dimensions L x W x H in mm	5500 x 720 x 1400 mm	
Weight/element	6000 kg	
Elements/truck (24 t)	4 elements	
Minimum installation length	88 m (not including terminal elements)	
Curve radius	r ≥ 197 m, smaller radii on request	
Coupling/exposed steel parts	fully integrated, exposed parts hot-dip galvanized	

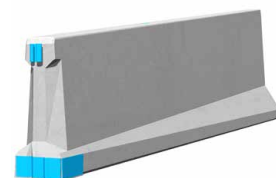
## System element - combinable



Transition/terminal element  
REBLOC 140SFS\_5.5TS



Standard element  
REBLOC 140SFS\_5.5\_H4a/W4



Transition element  
REBLOC 80S\_140SFS\_5.5