

REBLOC RB100SF-8

Standard element

Installation

Free standing



Containment level

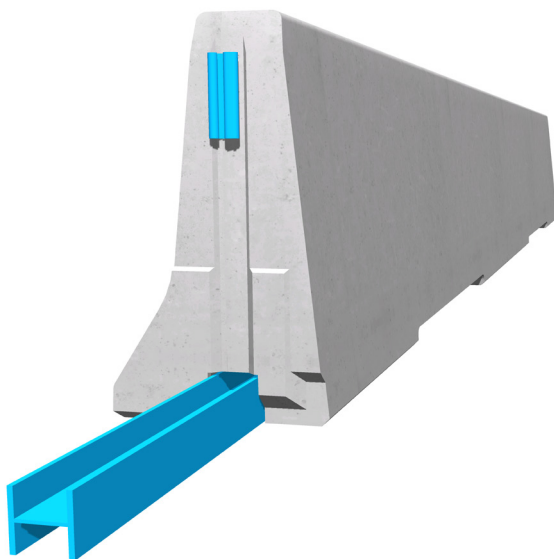
H2 (covers H1, N1, T3, T2 and T1)

Working width

W3 (covers W4, W5, W6, W7 and W8)

Impact severity level

ASI B



Precast concrete vehicle restraint systems are used for long lasting protection on the central reservation and along the verge. Vehicles deviating from the road are retained or redirected and prevent a dangerous breakthrough onto the opposite carriageway. As a result road users and persons as well as objects at the roadside are well protected.

The integrated, innovative coupling does not contain any loose parts. This does not only enhance the safety, but also the installation speed. The easy installation, which does not depend on weather conditions, reduces the disruptions of the traffic flow.

The system can also be used on bridge constructions with position securing (REBLOC 100-SFP-H2/W3).

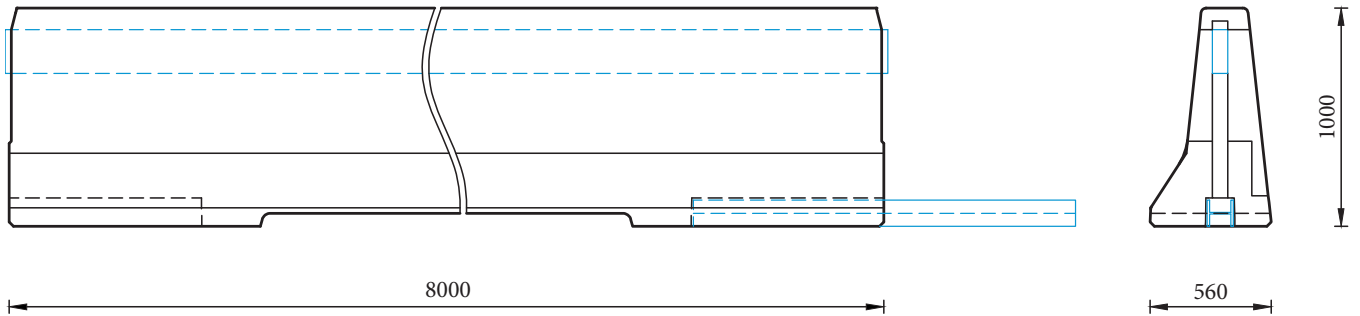
REBLOC RB100SF-8

Standard element

H2

W3

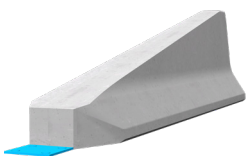
Technical data



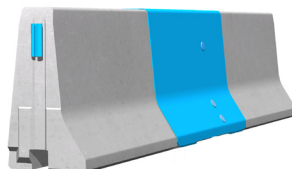
all dimensions in mm

Containment level	H2
Working width	W3
Impact severity level	ASI B
Vehicle intrusion	VI1
Installation	free standing on asphalt/concrete
Terminal elements	required; REBLOC 100SF_4TR/L (4 x M24 adhesive anchors)
Dimensions L x W x H in mm	8000 x 560 x 1000 mm
Weight/element	6000 kg
Elements/truck (24 t)	4 elements
Minimum installation length	96 m (not including terminal elements)
Curve radius	$r \geq 350$ m, smaller radii on request
Coupling/exposed steel parts	fully integrated, exposed parts hot-dip galvanized
CE certification	✓

System elements - combinable



Terminal element
REBLOC 100SF-4TR/L



Dilatation element
REBLOC 100SF_2.35EXM