



DESIGNED TO SECURE AND PROTECT


stronguard[™]
interceptor



Stronguard™ Interceptor - the ultimate defence against hostile attack.

Crash tested at the TRL test site, the Interceptor was put through its paces. The purpose of the test was to determine the stopping or restraining potential when impacted at 90 degrees by a 7.5 tonne, twin axle vehicle travelling at 80km/h (50mph).

“On impact the vehicle was immobilised by the system with no major parts of the vehicle penetrating past. The gate deformed, as designed, under the impact but remained intact such that no further vehicles could pass.”

Crash tested to PAS 68: 2007 Ref: 7500-80, the Interceptor stood its ground and passed without compromise.

The Interceptor is fully manufactured in the UK, with instant access to expert advice and spare part availability. For the complete security solution, additional gate leaves can be ordered and held in stock for immediate replacement, should the Interceptor be called into action.

Stronguard™ Interceptor PAS68:2007: V/7500 (N3) / 80 / 90: 0/0

Telephone 0115 983 2304

enquiries@hardstaffbarriers.com

www.hardstaffbarriers.com



DESIGNED TO SECURE AND PROTECT

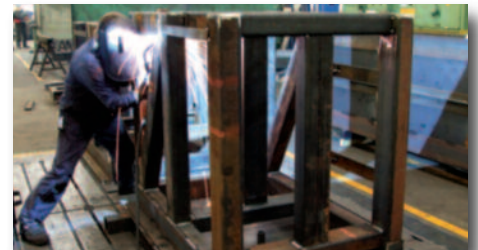

stronguardTM
interceptor



SPECIFICATIONS*

Much more than an access control system - a surface mounted gate (SMG), which can be installed with foundations required for the fixing bolts of 500mm, meaning installation can be performed with the minimum of disruption to the surrounding areas and underground services.

- Counter balance gate system.
- Standard gate height 1300mm.
- Fence top can be added to match fenceline to prevent pedestrian intrusion.
- Standard gate widths available - 3.5m, 4.0m, 4.5m, 5.0m, 5.5m.
- Non-standard widths are available on request.
- Gate leaf, 2 buttresses and rear ground beam for surface mounting.
- 8 polypropylene side rollers fully ball raced located inside main buttresses.
- 2 stainless steel main support roller and shaft all fully ball raced.
- 2 stainless steel rear roller assemblies fully ball raced complete with track cleaning brushes.
- Gate frame and posts fabricated from rolled steel hollow section and universal beam, rear ground beam fabricated from twin parallel fangled channels.
- Gate, rear ground track and posts all painted to individual requirements.
- All welding to EN287 (BS4872).
- All surface mounted.
- Speed can be set from 0.5m per second to 1.5m ~per second.
- Manual override facility fitted to motor in case of power cut.
- All electronics are weatherproofed to IP56.



Hand built and manufactured from the highest quality materials.



Personalised finishing can be provided to enhance the aesthetic appeal and promote corporate branding.



Hillside, Gotham Road, Kingston-on-Soar, Nottingham, NG11 0DF

Tel 0115 983 2304 enquiries@hardstaffbarriers.com

A member of the Hill & Smith Holdings PLC Group

Telephone 0115 983 2304

enquiries@hardstaffbarriers.com

www.hardstaffbarriers.com